



FONTES DE PARIS

ILLUMINATION DES VILLES DU MONDE



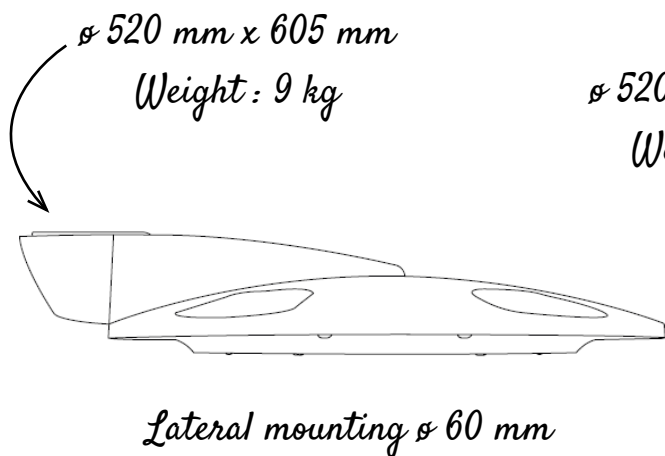
LEDCYP

DESCRIPTION

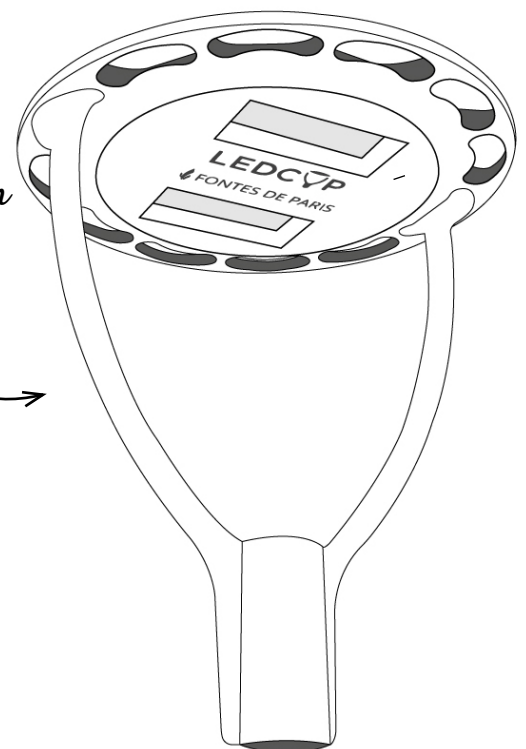
Launched early this 2020 year, the Ledcup is a luminaire offering an original and elegant design, particularly adapted to parcs, residential streets, cycling paths, footpaths and squares. Its recommended installation height is between 3 and 6 meters.

It is equipped with high-performance Nichia LED and is delivered pre-cabled with a 3 or 5 1.5mm conductors H07 RNF cable. Like our other KJLed and Ledrose luminaires, the Ledcup is fashioned from 100% recycled aluminium. The luminaire is proposed with several light distributions as well as a 4DIM driver. Several options can be added, such as a presence detector sensor, a Zhaga sensor, or a «smart city» module.

- > 100% recycled aluminium
- > Polycarbonate or extra clear tempered glass
- > 2 x 12 led : 60W max



$\varnothing 520 \text{ mm} \times 670 \text{ mm}$
Weight : 9,2 kg



Top mounting $\varnothing 60 / 76 \text{ mm}$



TECHNICAL DESCRIPTION

- > Single size diameter 520 mm x 670 mm for top mounting, 520 mm x 605 mm for lateral mounting
- > 2 plates with 12 Nichia LED standard Zhaga with NTC
- > Colour temperatures 2200°K - 2700°K - 3000°K - 4000°K
- > IP 66
- > 100% recycled die-cast aluminium foundry
- > Polyester powder coating with RAL of your choosing
- > Seaside treatment option
- > Extra clear tempered glass IK08 or polycarbonate IK10
- > « Fontes de Paris » serigraphy
- > Class 1 or class 2 mounting
- > Top mounting \varnothing 60mm or lateral mounting \varnothing 76mm
- > Delivered pre-cabled RO7 RNF 3x or 5x 1.5mm
- > Eligible for energy certificates
- > ENEC certificate ongoing

CONFORMITY (DECREE OF 27/12/18)

- > ULR = 0.5%
- > Flux code CIE N°3 = 98%
- > Surface density determined by our offices after lighting study



OPTIONS

- > Presence detector
- > Custom hourly gradation
- > Constant Lumen Output (CLO)
- > Backlight control





LEDCYP

INNOVATIVE
DESIGN
ECOLOGICAL



The Ledcup luminaire adapts itself perfectly with all types of architecture and environment and will be able to highlight parcs, walkways, parkings and rural zones.

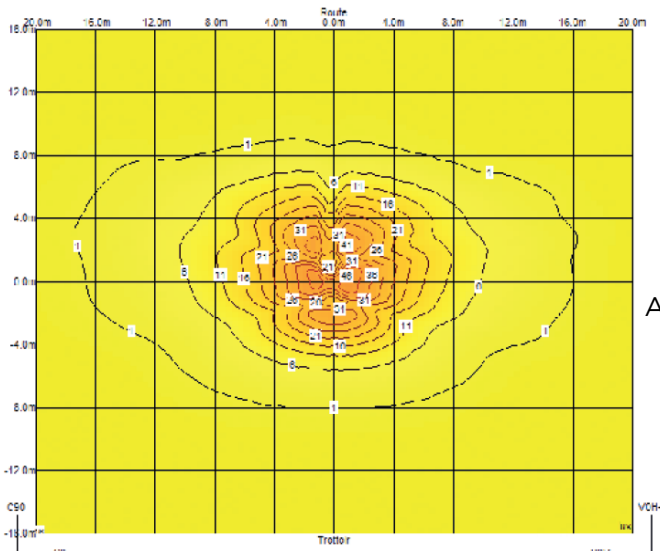


POWER

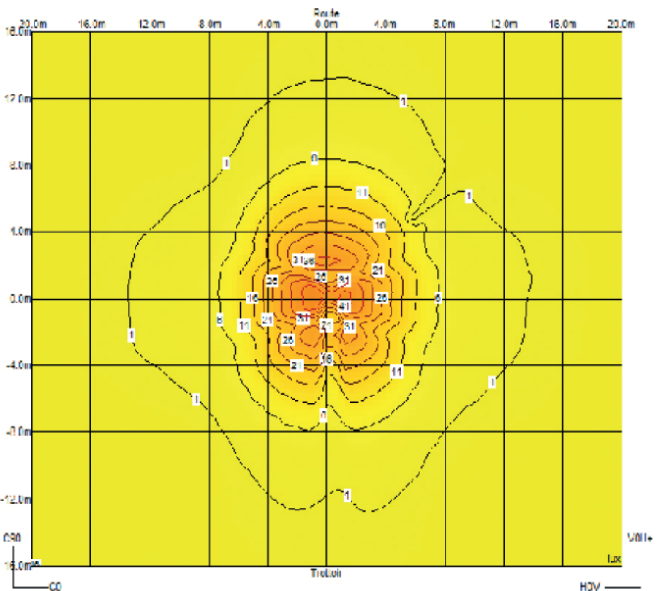
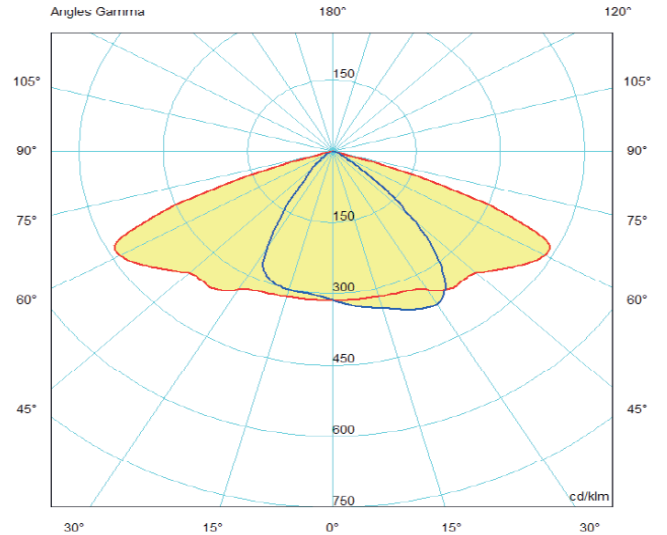
			4000K	3000K	2700K	2200K
N. LED	mA	W TOT	lm OUT	lm OUT	lm OUT	lm OUT
24	350	25	3,291	3,137	3,088	2,496
24	500	36	4,561	4,346	4,280	3,457
24	600	44	5,371	5,111	5,040	4,067
24	700	52	6,153	5,842	5,774	4,652



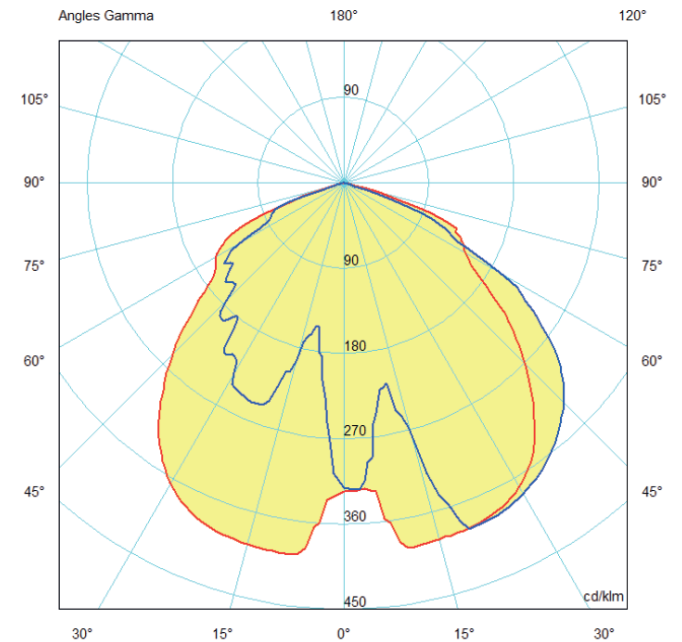
PHOTOMETRIES

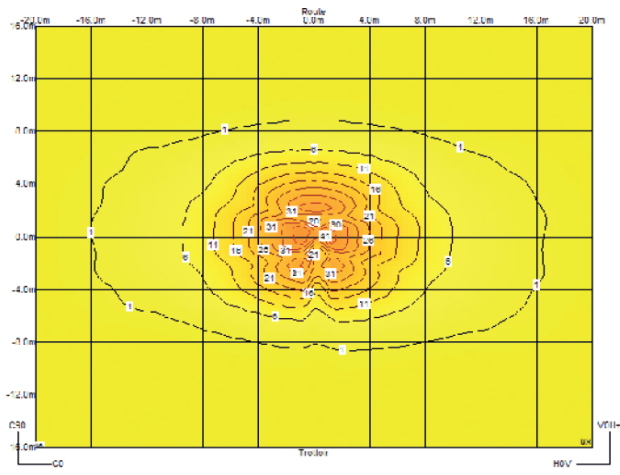


STD
ASSYM

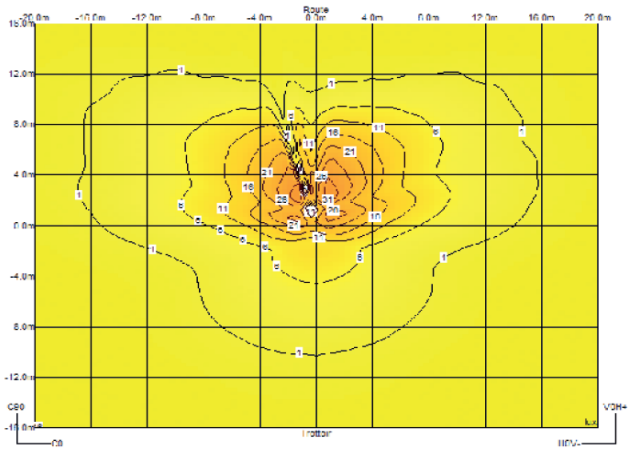
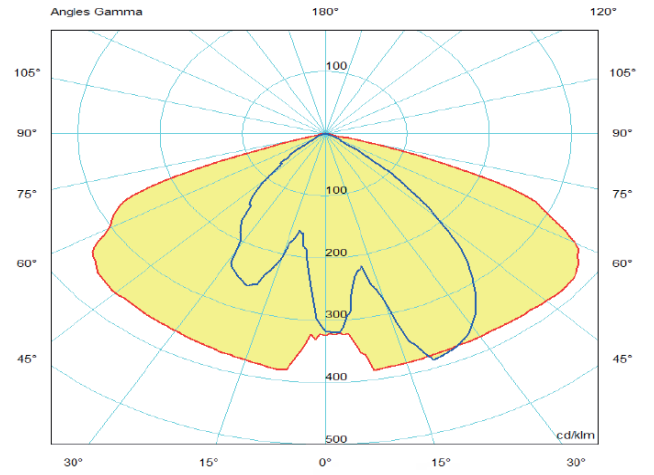


STD
CIRC

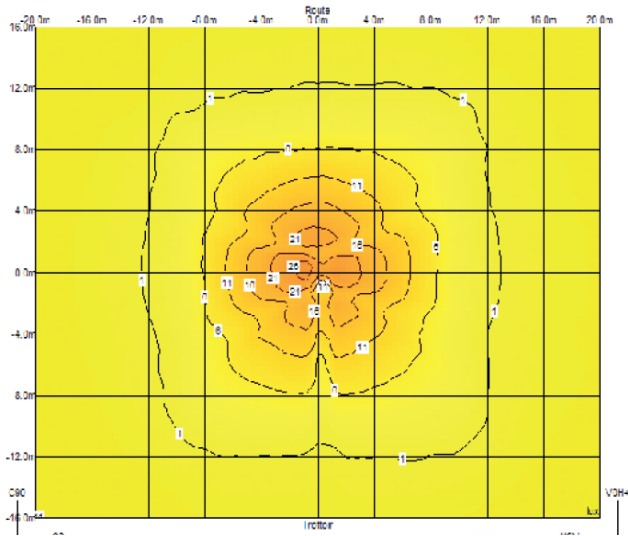
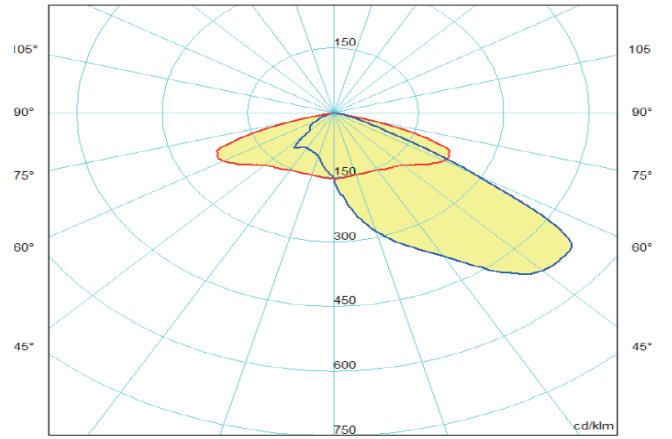




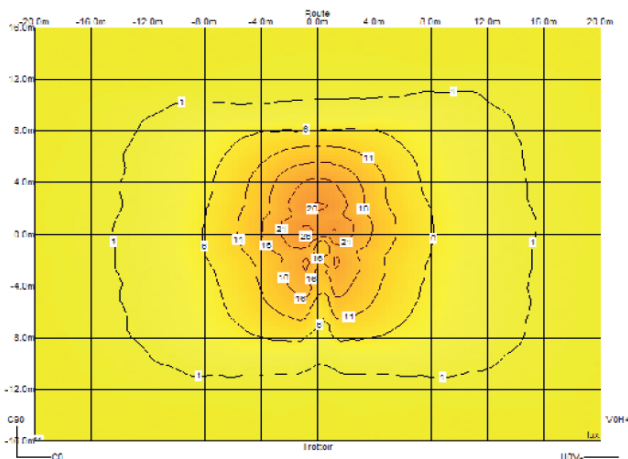
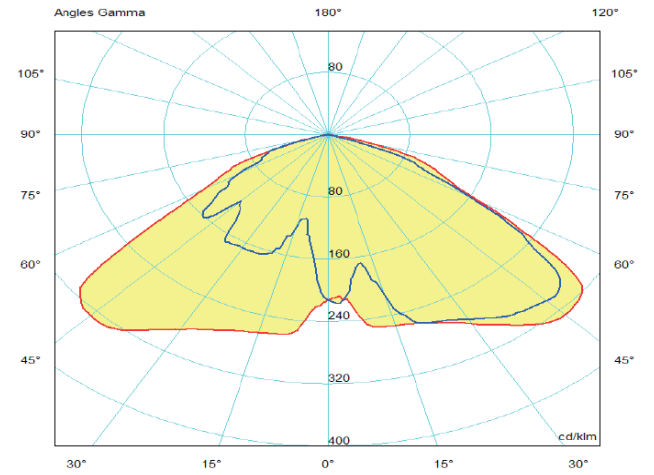
STD
SYM



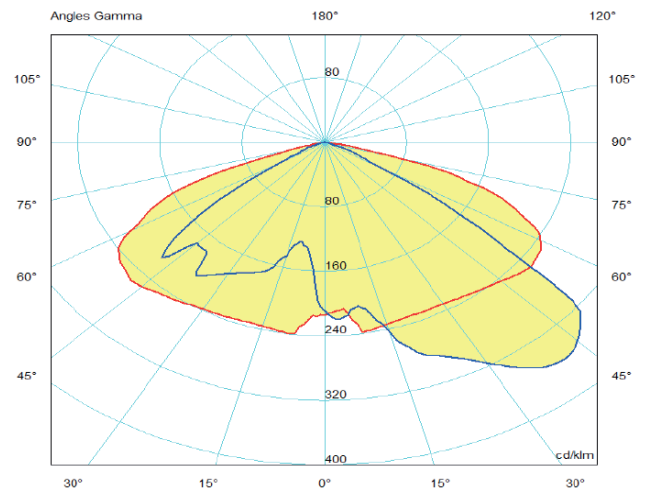
RLA
ASSYM



RLA
CIRC



RLA
SYM





FONTES DE PARIS

ILLUMINATION DES VILLES DU MONDE

Industrial Zone - 10330 CHAVANGES

Tél : +33 (0)3 25 92 39 54

contact@fontesdeparis.com

www.fontesdeparis.com

Deposited model